

# FOREST OAKS RESIDENTIAL, P.U.D.

BEING A REPLAT OF PORTIONS OF BLOCK 29, THE PALM BEACH FARMS COMPANY PLAT NO. 3, AS RECORDED IN PLAT BOOK 2, PAGES 45 THROUGH 54, TOGETHER WITH A PORTION OF PLAT NO. 1, LUCERNE LAKES (PUD), AS RECORDED IN PLAT BOOK 30, PAGES 41 AND 42, TOGETHER WITH A PORTION OF PLAT NO. 2, LUCERNE LAKES (PUD), AS RECORDED IN PLAT BOOK 32, PAGES 191 AND 192, AND TOGETHER WITH PORTIONS OF LUCERNE LAKES GOLF COURSE, AS RECORDED IN PLAT BOOK 87, PAGES 184 THROUGH 189, ALL OF THE PUBLIC RECORDS OF PALM BEACH COUNTY, FLORIDA, LYING IN SECTIONS 28 AND 33, TOWNSHIP 44 SOUTH, RANGE 42 EAST, PALM BEACH COUNTY, FLORIDA.

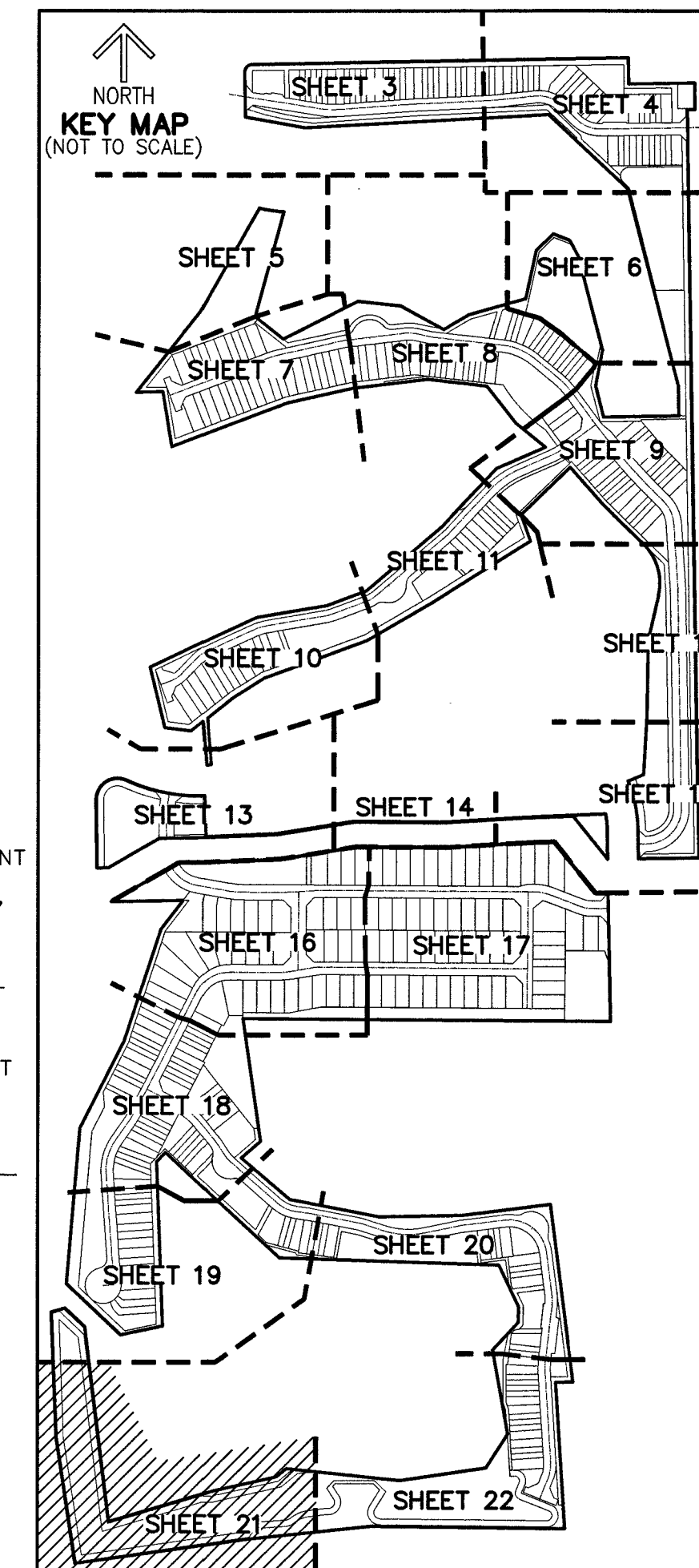
THIS INSTRUMENT PREPARED BY  
 DAVID P. LINDLEY  
 OF  
**CAULFIELD and WHEELER, INC.**  
 SURVEYORS - ENGINEERS - PLANNERS  
 7900 GLADES ROAD, SUITE 100  
 BOCA RATON, FLORIDA 33434 - (561)392-1991

### LEGEND/ABBREVIATIONS:

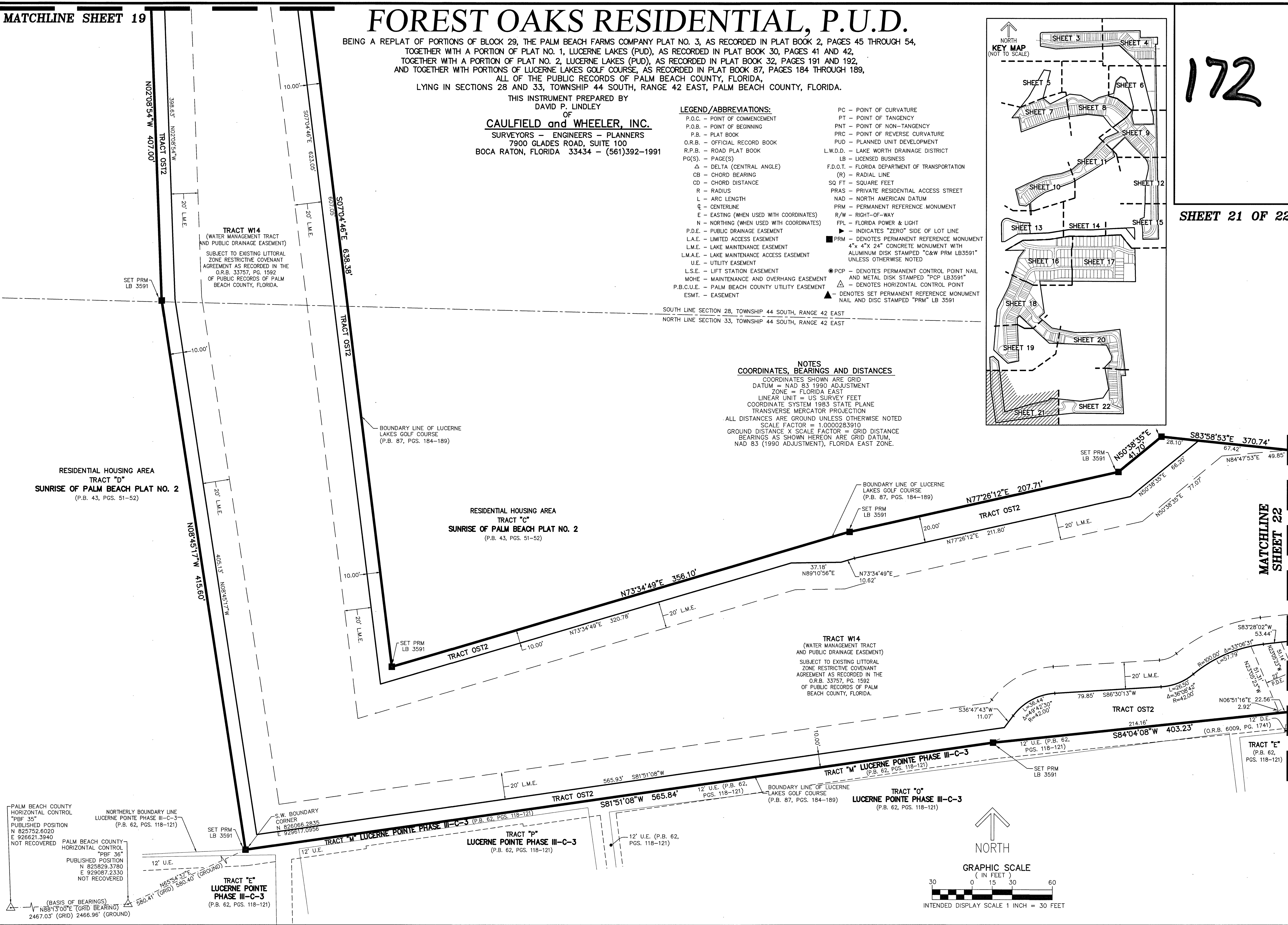
- |   |  |
|---|--|
| P.O.C. - POINT OF COMMENCEMENT                  | PC - POINT OF CURVATURE  |
| P.O.B. - POINT OF BEGINNING                     | PT - POINT OF TANGENCY   |
| P.B. - PLAT BOOK                                | PNT - POINT OF NON-TANGENCY  |
| O.R.B. - OFFICIAL RECORD BOOK                   | PRC - POINT OF REVERSE CURVATURE   |
| R.P.B. - ROAD PLAT BOOK                         | PUD - PLANNED UNIT DEVELOPMENT   |
| PG(S) - PAGE(S)                                 | L.W.D.D. - LAKE WORTH DRAINAGE DISTRICT  |
| Δ - DELTA (CENTRAL ANGLE)                       | LB - LICENSED BUSINESS   |
| CB - CHORD BEARING                              | F.D.O.T. - FLORIDA DEPARTMENT OF TRANSPORTATION  |
| CD - CHORD DISTANCE                             | (R) - RADIAL LINE  |
| R - RADIUS                                      | SQ FT - SQUARE FEET  |
| L - ARC LENGTH                                  | PRAS - PRIVATE RESIDENTIAL ACCESS STREET   |
| ⊕ - CENTERLINE                                  | NAD - NORTH AMERICAN DATUM   |
| E - EASTING (WHEN USED WITH COORDINATES)        | PRM - PERMANENT REFERENCE MONUMENT   |
| N - NORTHING (WHEN USED WITH COORDINATES)       | R/W - RIGHT-OF-WAY   |
| P.D.E. - PUBLIC DRAINAGE EASEMENT               | FPL - FLORIDA POWER & LIGHT  |
| L.A.E. - LIMITED ACCESS EASEMENT                | ▶ - INDICATES "ZERO" SIDE OF LOT LINE  |
| L.M.E. - LAKE MAINTENANCE EASEMENT              | ■ PRM - DENOTES PERMANENT REFERENCE MONUMENT   |
| L.M.A.E. - LAKE MAINTENANCE ACCESS EASEMENT     | 4" x 4" x 24" CONCRETE MONUMENT WITH ALUMINUM DISK STAMPED "C&W PRM LB3591" UNLESS OTHERWISE NOTED |
| U.E. - UTILITY EASEMENT                         | ● PCP - DENOTES PERMANENT CONTROL POINT NAIL AND METAL DISK STAMPED "PCP LB3591"                   |
| L.S.E. - LIFT STATION EASEMENT                  | △ - DENOTES HORIZONTAL CONTROL POINT   |
| MOHE - MAINTENANCE AND OVERHANG EASEMENT        | ▲ - DENOTES SET PERMANENT REFERENCE MONUMENT NAIL AND DISC STAMPED "PRM" LB 3591                   |
| P.B.C.U.E. - PALM BEACH COUNTY UTILITY EASEMENT |  |
| ESMT. - EASEMENT                                |  |

### NOTES COORDINATES, BEARINGS AND DISTANCES

COORDINATES SHOWN ARE GRID  
 DATUM = NAD 83 1990 ADJUSTMENT  
 ZONE = FLORIDA EAST  
 LINEAR UNIT = US SURVEY FEET  
 COORDINATE SYSTEM 1983 STATE PLANE  
 TRANSVERSE MERCATOR PROJECTION  
 ALL DISTANCES ARE GROUND UNLESS OTHERWISE NOTED  
 SCALE FACTOR = 1.0000283910  
 GROUND DISTANCE X SCALE FACTOR = GRID DISTANCE  
 BEARINGS AS SHOWN HEREON ARE GRID DATUM,  
 NAD 83 (1990 ADJUSTMENT), FLORIDA EAST ZONE.



172



PALM BEACH COUNTY HORIZONTAL CONTROL "PBF 35" PUBLISHED POSITION N 825752.6020 E 926621.3940 NOT RECOVERED

PALM BEACH COUNTY HORIZONTAL CONTROL "PBF 36" PUBLISHED POSITION N 825829.3780 E 929087.2330 NOT RECOVERED

(BASIS OF BEARINGS)  
 N88°13'00"E (GRID BEARING) 2467.03' (GRID) 2466.96' (GROUND)

NORTHERLY BOUNDARY LINE LUCERNE POINTE PHASE III-C-3 (P.B. 62, PGS. 118-121)

S.W. BOUNDARY CORNER N 826066.2835 E 929617.0956

TRACT "E" LUCERNE POINTE PHASE III-C-3 (P.B. 62, PGS. 118-121)

TRACT "M" LUCERNE POINTE PHASE III-C-3 (P.B. 62, PGS. 118-121)

TRACT "P" LUCERNE POINTE PHASE III-C-3 (P.B. 62, PGS. 118-121)

TRACT "O" LUCERNE POINTE PHASE III-C-3 (P.B. 62, PGS. 118-121)

TRACT "E" (P.B. 62, PGS. 118-121)